

\$17,500 - 4300 Burch Drive, Del Valle

MLS® #3066778

\$17,500

0 Bedroom, 0.00 Bathroom,
Commercial Lease on 5.83 Acres

Burch Ida Mae Estate, Del Valle, TX

Excellent industrial location close to Austin International Airport and Tesla manufacturing facility. Secure fenced industrial storage yard, truck trailers storage available. Caliche base over 4 acres with additional storage area across the property. Located off US 71 and Texas 130. Less than 5 miles to the airport. Excellent site for industrial storage and logistics support.

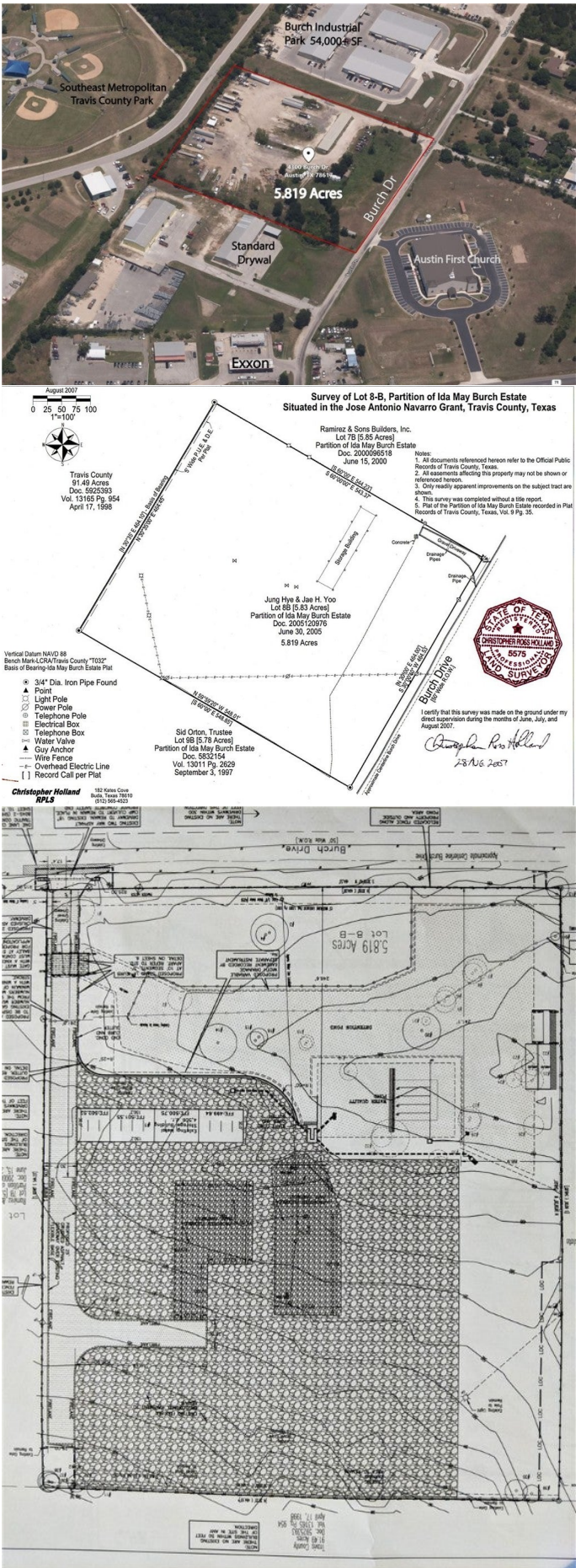
Built in 2001

Essential Information

MLS® #	3066778
Price	\$17,500
Bathrooms	0.00
Acres	5.83
Year Built	2001
Type	Commercial Lease
Sub-Type	Industrial
Status	Active

Community Information

Address	4300 Burch Drive
Area	SE
Subdivision	Burch Ida Mae Estate
City	Del Valle
County	Travis
State	TX
Zip Code	78617



Amenities

Utilities	Electricity Connected, Water Connected, Sewer Not Available
Parking	Gated, Parking Lot, Secured
View	None

Interior

Interior	See Remarks
Heating	None

Additional Information

Date Listed	September 20th, 2022
Days on Market	603
Zoning	Austin 2-Mile ETJ, no zon

Listing Details

Listing Office	Texas Realty Partners, LLC
----------------	----------------------------

Property Listed by: Texas Realty Partners, LLCThe information being provided is for consumers' personal, non-commercial use and may not be used for any purpose other than to identify prospective properties consumers may be interested in purchasing. Based on information from the Austin Board of REALTORS® (alternatively, from ACTRIS) from May 15th, 2024 at 9:15pm CDT. Neither the Board nor ACTRIS guarantees or is in any way responsible for its accuracy. The Austin Board of REALTORS®, ACTRIS and their affiliates provide the MLS and all content therein "AS IS" and without any warranty, express or implied. Data maintained by the Board or ACTRIS may not reflect all real estate activity in the market. All information provided is deemed reliable but is not guaranteed and should be independently verified.